

# *Annual Report*

## *2013*

*The Child Care Council of Dutchess and Putnam, Inc.*



## *Connecting Communities and Children*

The Child Care Council of Dutchess and Putnam, Inc. works to promote affordable and quality child care, provide information and support to families and strengthen the early childhood workforce in Dutchess and Putnam counties.



January 1, 2013 through December 31, 2013

## How We Have Grown



1970

The Dutchess County Legislature establishes the Dutchess County Child Development Committee. There is one secretary as the only paid employee. There are five day care centers in Dutchess County.

1981 to 1984

The Dutchess County Child Development Council is formed. The Council is established as the Child Care Resource and Referral Service for Dutchess County. The Council administers the Child Care Food Program for family day care providers. There are 29 licensed day care centers and 30 family day care homes. Staff increases from two to six.

1991 to 1995

The Council becomes the NYS Registrar for family day care homes. Through a contract with the Dutchess County Department of Health, the Council employs two Early Intervention Initial Service Coordinators. Staff grows to 15.

1998

The Council's on-site Resource Lending Library is made possible with funding from IBM and the American Business Collaboration.



2006

The Council becomes the Enrollment Agency for Legally Exempt Child Care for Dutchess and Putnam counties. Upon the request of the Office of Children and Family Services, the Council's Board of Directors votes unanimously to provide services in Putnam County, to include: resource and referral, registration, food program administration, and child care subsidy administration. Services in Putnam County begin in February.

2010

Distance Learning classes are developed by the Council. Child Day Care scholarships are funded by Dyson Foundation.

2013

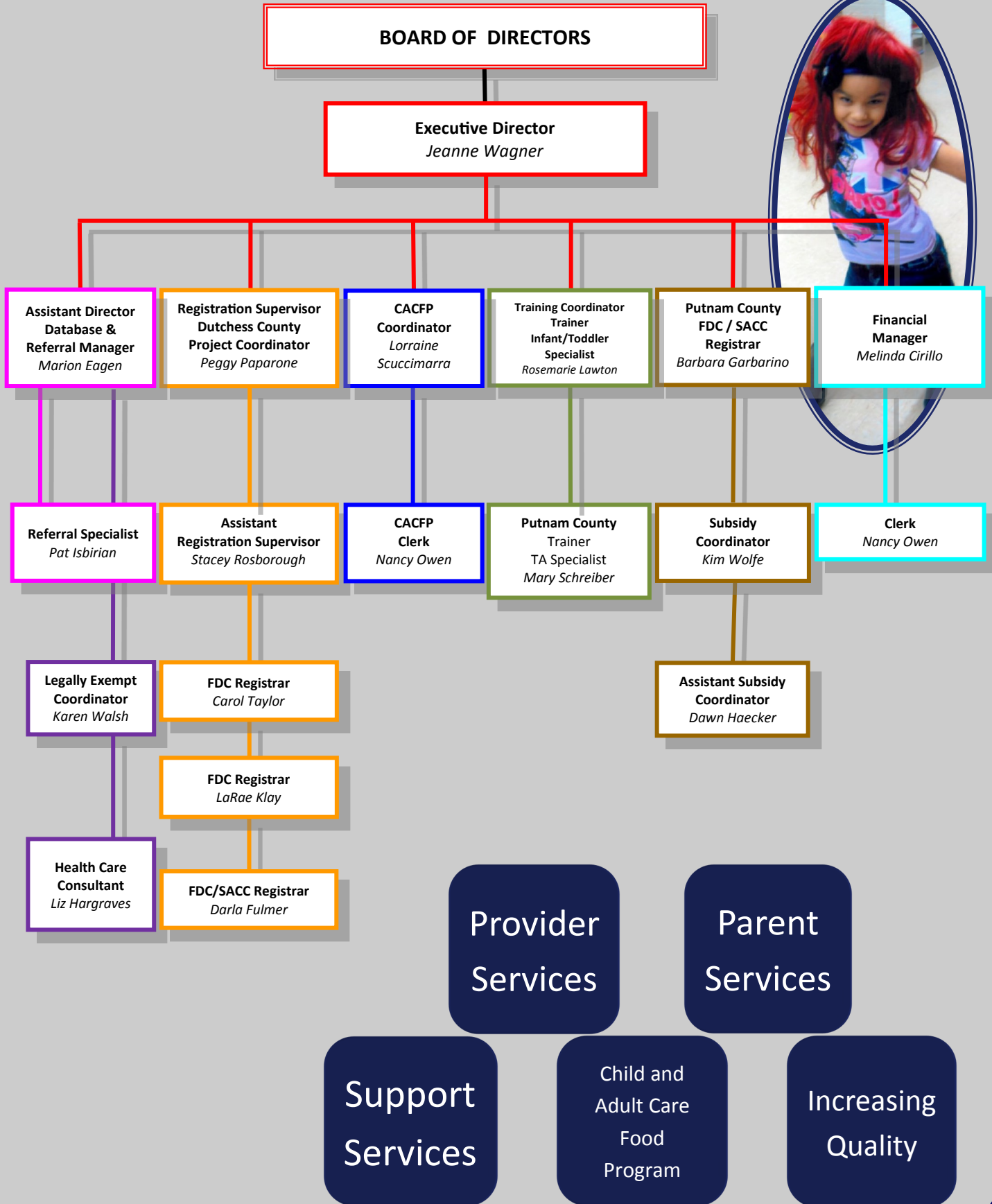
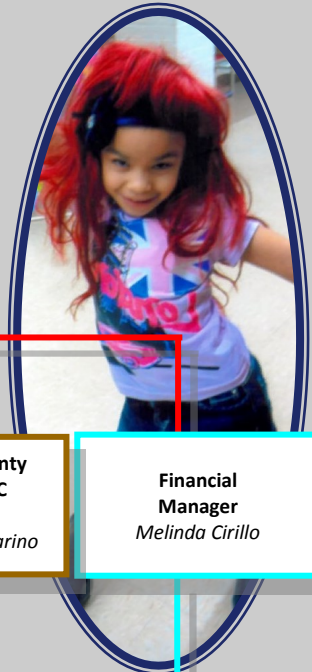
Council receives a Dutchess County Partnership Grant "Healthy Connections Start in Child Care"

2013

The Council becomes Quality Assured by Child Care Aware of America.



**CHILD CARE COUNCIL OF DUTCHESS AND PUTNAM COUNTIES ORGANIZATIONAL CHART- 2013**



## Child Care Facts and Figures

Jeanne Wagner, Melinda Cirillo



The average annual cost of full-time care for an infant in center-based care is \$14,939 in New York State.

About one in four children ages five and younger (25%) is living in poverty in New York State.

About two in three (64.4%) children age 2 are fully immunized in New York State.

4.6% of children ages birth to five have had a diagnosed disability or developmental delay in New York State.

About one in three children confirmed by Child Protective Services as victims of maltreatment are between the ages of birth to 4 years old in New York State

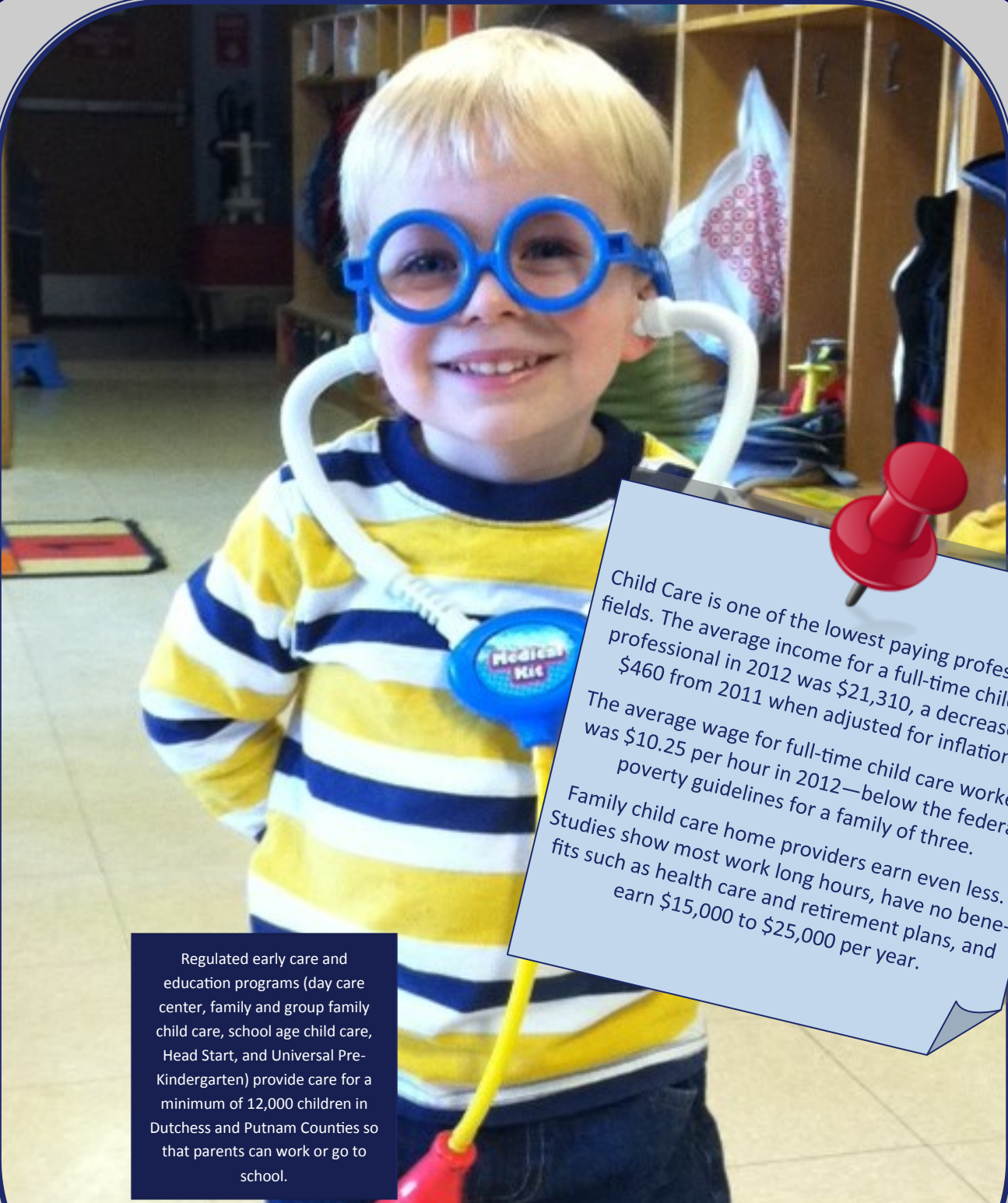
It is estimated that 1.2% of children ages birth to five are homeless. This represents 31 children per mile on the New York State Thruway.

86% of children ages 1 to 5 have family members who read to them 3 or more days per week in New York State.

In every region of the United States, the average family spends less on food than it does for care for an infant in a child care center.







Regulated early care and education programs (day care center, family and group family child care, school age child care, Head Start, and Universal Pre-Kindergarten) provide care for a minimum of 12,000 children in Dutchess and Putnam Counties so that parents can work or go to school.

Child Care is one of the lowest paying professional fields. The average income for a full-time child care professional in 2012 was \$21,310, a decrease of \$460 from 2011 when adjusted for inflation. The average wage for full-time child care workers was \$10.25 per hour in 2012—below the federal poverty guidelines for a family of three. Family child care home providers earn even less. Studies show most work long hours, have no benefits such as health care and retirement plans, and earn \$15,000 to \$25,000 per year.

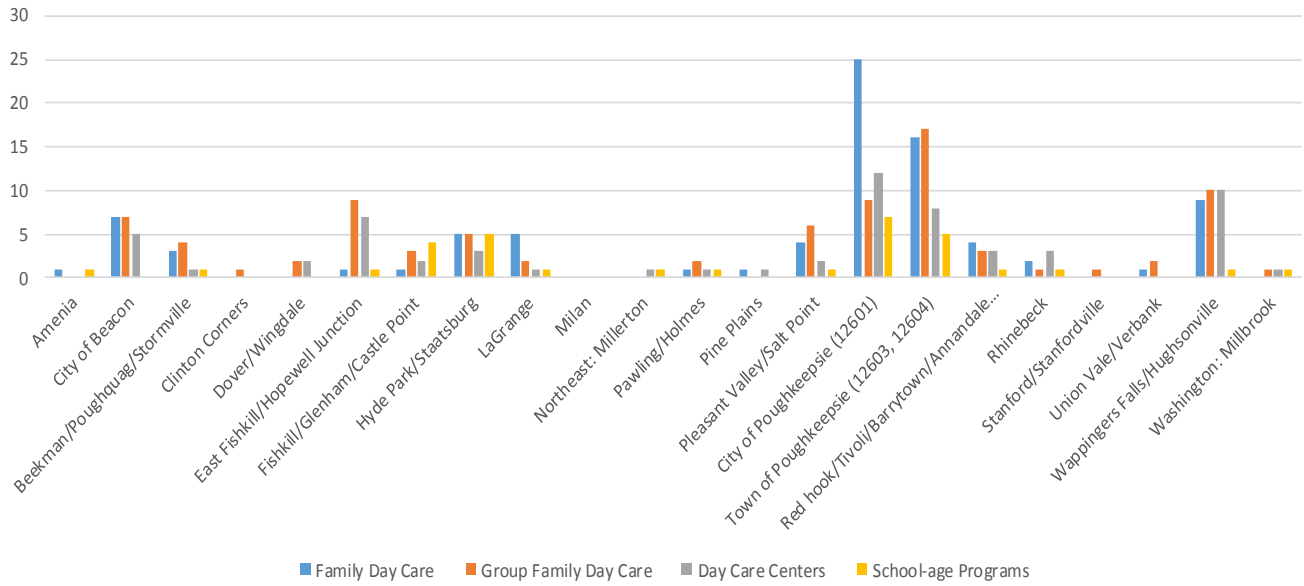
In 2013, the Child Care Council of Dutchess and Putnam, Inc. spent \$89,125 on goods and services in Dutchess County.

There are over 2,000 women and men employed in Dutchess and Putnam Counties in the early care and education workforce.

The Child Care Council of Dutchess and Putnam, Inc. employed 18 staff. 78% resided in Dutchess County, 11% in Putnam County, and 11% in Ulster County

As of 12/31/13, there were 358 regulated child care programs in Dutchess and Putnam Counties.

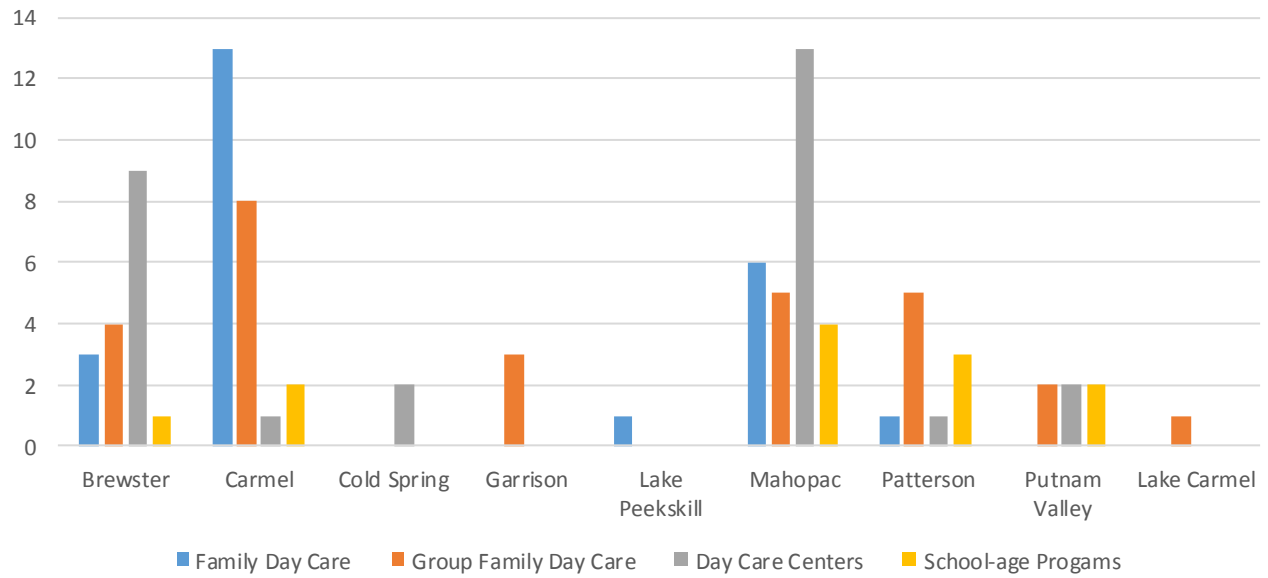
### Number of Family Day Care, Group Family Day Care, Day Care Centers and School-age Programs in Dutchess County



Zip Code	Town	Number of Requests for Care
12501	Amenia	1
12507	Barrytown	0
12508	Beacon	32
12601	City of Poughkeepsie	199
12602	City of Poughkeepsie P.O. Boxes	2
12514	Clinton Corners	1
12522	Dover Plains	4
12524/12511	Fishkill/Castle Point	21
12531	Holmes	3
12533	Hopewell Junction	25
12537	Hughsonville	0
12538	Hyde Park	31
12540	LaGrangeville	5
12545	Millbrook	3
12546	Millerton	1
12531/12564	Pawling/Holmes	5
12567	Pine Plains/Stanfordville	1

Zip Code	Town	Number of Requests for Care
12569	Pleasant Valley	4
12570	Poughquag	9
12571	Red Hook	7
12572	Rhinebeck	8
12574	Rhinecliff	0
12578	Salt Point	2
12580	Staatsburg	7
12582	Stormville	3
12583	Tivoli	0
12603	Town of Poughkeepsie	77
12604	Town of Poughkeepsie	0
12585	Verbank	0
12590	Wappingers Falls	64
12592	Wassaic	1
12594	Wingdale	6
Other Dutchess Requests		34

## Number of Family Day Care, Group Family Day Care, Day Care Centers and School-age Programs in Putnam County



Zip Code	Town	Number of Requests for Care
10509	Brewster	15
10512	Carmel	35
10516	Cold Spring	1
10524	Garrison	5
10537	Lake Peekskill	6
10541/10542	Mahopac	21
12563	Patterson	10
10579	Putnam Valley	5
Other Putnam Requests		9

The chart on the left shows the towns and cities in Dutchess County where parents requested child care. The most requested regions were the City of Poughkeepsie and the Town of Poughkeepsie, with 199 and 77 requests, respectively. Wappingers Falls, Hyde Park and Beacon were the next most requested areas. The County's population is the most densely concentrated in urban and suburban areas. Requests for child care in its more rural locations, such as Amenia, Tivoli, Pine Plains and Millerton, and other towns in northern Dutchess County were substantially lower, with fewer than five requests for each.

The above chart shows the number of child care requests across the towns, cities and villages of Putnam County.

The most requested location for child care was Carmel, with Mahopac and Brewster following as second and third, respectively. Cold Spring, Garrison and Putnam Valley received fewer than five requests for child care, while no requests were made for child care in Lake Peekskill.

## Building Quality Through Professional Development

Rosemarie Lawton, Mary Schreiber

*"National Research has demonstrated that the quality of young children's experiences in early care and education is directly related to the specific preparation in early childhood education obtained by the adults caring for and educating them."*

[www.earlychildhood.org/pdfs/CoreBody.pdf](http://www.earlychildhood.org/pdfs/CoreBody.pdf)

All registered and licensed day care programs are required to meet and remain in compliance with the New York State Child Day Care Regulations and receive training in the following nine topic areas:

1. Principles of Early Childhood Development
2. Child Day Care Program Development
3. Statutes and Regulations Pertaining to Child Day Care
4. Child Abuse and Maltreatment Prevention and Reporting
5. Statutes and Regulations pertaining to Child Abuse and Maltreatment
6. Shaken Baby Syndrome (not required for School Age Child Care Programs)
7. Safety and Security
8. Business Record Maintenance and Management
9. Nutrition and Health Needs of Children and Infants

The number of attendees for 2013 trainings was 1300 which represents a 3% increase over 2012.

The Council published three training calendars in 2013 which included 176 available trainings.

The NYS School Age Child Care Credential Preparation Course was offered in 2013 with 4 participants.



### New York State School - Age Care Credential

The New York State School-Age Care (SAC) Credential is designed to promote quality services to children and families by providing specific standards, training and evaluation of afterschool professionals. The SAC Credential was developed in collaboration with New York State Office of Children and Family Services Bureau of Early Childhood Services and Cornell University and can satisfy a New York State Regulations qualification for site director of a school-age/afterschool program.

AfterSchool Works! New York serves as the credentialing agency and delivers credential preparatory coursework in partnership with a number of Host Agencies throughout the state.

Working towards the credential can be a rewarding experience, both personally and professionally. By doing so, it offers professionals the opportunity to:

- \* Assess their own work in relation to competency standards;
- \* Obtain feedback, guidance and support from other professionals in the field;
- \* Improve and expand their professional practice in ways that are satisfying for themselves and beneficial for the children and families they serve;
- \* Earn a professional credential that is widely respected and recognized throughout New York State and beyond.



### Dutchess County Partnership Grant

The Council was awarded a Dutchess County Partnership Grant for our program "Healthy Connections Start in Child Care." This program offered free training on nutrition and fun new activities to increase movement for children in 32 child care programs in Dutchess County. Each participating program also received about \$100 worth of resource materials to use in their programs.



### Child Care Tuition Scholarship Program

Through this program, funded by the Dyson Foundation, parents were able to retain jobs and/or go to school. Children had access to licensed child care centers with appropriate activities in a reliable and stable environment. Child care centers could depend on receiving monthly income of one-half of the weekly tuition of participating children. In 2013, this program supported the following:

- 14 child care centers;
- 38 adults (single and two parent families);
- 36 children: 2 toddlers, 18 three and four year olds, 10 five year olds and 6 school age children

All families earned under 250% of the federal poverty guidelines.

### Child Care Program Quality

Quality child care is defined as positive early learning experiences which foster intellectual, social and emotional development and lay the foundation for later school success for all children. Therefore, children living in high-risk environments need additional supports to promote their healthy growth and development. All child-care arrangements including family, friend, neighbor, and family—and center-based child care, have the potential to provide high-quality, individualized, responsive and stimulating experiences that occur within the context of strong relationships and which are imbedded in everyday routines.

(source: <http://www.zerotothree.org/early-care-education/>)

As part of the 10/1/12-9/30/13 Child Care Resource and Referral contract, the Child Care Council of Dutchess and Putnam, Inc. distributed Quality Improvement grants to child care centers and school—age programs, 14 in Dutchess and 8 in Putnam County.



## Child Care Resource and Referral (Dutchess & Putnam)

Marion Eagen, Pat Isbirian

- \* Provides information to parents on locating child care, consumer education, referrals, subsidies, services for families
- \* Recruits child care providers, provides start-up information and technical assistance in meeting regulatory requirements
- \* Provides the Community with education on child care issues and current data needed in planning for community services
- \* Supports employers in planning, implementing and providing employee child care services



### Statistics

Number of:	Dutchess	Capacity	Putnam	Capacity	Program Totals	Total Capacity
Day Care Centers	63	4687	28	2085	91	6772
Group Family Day Care	81	1268	25	384	106	1652
Family Day Care	76	596	21	164	97	760
School Age Child Care	33	1631	11	730	44	2361
Total	253	8182	85	3363	338	11545

\* estimates

## Legally Exempt Enrollment (Dutchess & Putnam)

Karen Walsh



- \* Legally exempt providers deliver informal, non-registered child care for relatives and a limited number of non-relative children who receive subsidy from the parents' local Department of Social Services.
- \* As the Enrollment Agency, the Council is responsible for reviewing and approving enrollment applications, as well as visiting a percentage of the legally exempt homes to inspect basic health and safety compliance.
- \* Enrollment Specialists have processed approximately 1868 applications.
- \* As of December 31, 2013, the number of legally exempt providers that have a payable status in Dutchess and Putnam counties is: 346.

## Child and Adult Care Food Program

Lorraine Scuccimarra and Nancy Owen



The Child Care Council of Dutchess and Putnam, Inc. is a sponsor of the Child and Adult Care Food Program (CACFP). CACFP is a federal program that reimburses child care providers for nutritious meals and snacks served to children in their care.

Children that are cared for by providers participating in the CACFP benefit by being fed nutritious USDA regulated meals that ensure their proper development. These children gain from early nutrition education that helps them establish positive eating habits that will enrich the quality of their diet throughout life.

Parents of children in child care are assured that their child (ren) receives high quality meals. With proper nutrition, the child is less likely to experience illness and fatigue and will develop at a normal physical and intellectual pace. Good nutrition is the recipe for an all-round happier child.

Child care providers receive nutrition education and support services from their CACFP sponsor that helps them serve nutritious meals and creates a positive eating environment for children. The quality of child care provided in our community is improved due to educational and financial resources available to caregivers through the CACFP.

In 2013, the Council had 67 Family, Group Family and Legally Exempt providers participating in CACFP.

In 2013, an average of 900 children a month were served healthy meals and snacks by CACFP providers in Dutchess and Putnam Counties.

## Infant and Toddler Services

Rosemarie Lawton has been our Infant/Toddler Specialist since June 2012.

The Child Care Council of Dutchess and Putnam, Inc, a member of the Region VI Infant and Toddler Network, provides support services to child care programs based on the Ten Components of Quality Infant Toddler Care.

These are:



1. Child Care Programs Following Appropriate Health and Safety Practices
2. Staff Well Trained in Early Childhood Development
3. Age Appropriate Environments
4. Small Groups with Optimal Adult/Child Ratios
5. Primary Caregiver Relationships and Continuity of Caregiver Over Time
6. Active and Responsive Caregiving to Support Children's Development
7. Curriculum, Observation and Individualized Programming
8. Support of Emerging Language and Literacy
9. Family Involvement and Cultural Continuity
10. Comprehensive Support Services

In 2013, Child Care Providers participated in group and/or onsite trainings or technical assistance opportunities in the following topic areas:

- Infant Toddler Environmental Rating Scales
- Discipline
- Developmentally Appropriate Environments and Materials
- Developmental Milestones
- Challenging Behaviors
- Language and Literacy
- Active and Responsive Caregiving
- Curriculum and Individualized Programming
- Family Engagement



## Family Day Care and School Age Registration

Peggy Paparone, Stacey Rosborough, Barbara Garbarino, Carol Taylor, LaRae Klay, and Darla Fulmer

The Child Care Council of Dutchess and Putnam, Inc. (CCCDP) regulates family day care programs and the after school child care programs in Dutchess and Putnam Counties. This includes processing new and renewal applications, monitoring and inspecting programs, investigating complaints, and offering professional training and technical assistance.

### 2013 Family Day Care Total Homes:

Dutchess: 76

Putnam: 21



### 2012 School Age Child Care Total Programs:

Dutchess: 33

Putnam: 11

### Complaints

The Office of Children and Family Services maintains a toll-free line for complaints about child care programs. Any person can call (800)-732-5207 or (845) 473-4141 during normal work hours and a staff person will take the information.

In 2013 the  
Council  
investigated  
11 complaints

### New Regulations

In 2013, new regulations were approved for family day care and group family day care providers. This was the first update since 2005. Changes include new requirements for assistants, new emergency medication approvals, requirements for renewal inspections, limitations of screen time, and changes to nutrition requirements and many more.

NYS OCFS has also changed and/or added many new forms for providers to use which are available on their website.

The regulations for Day Care Centers and School Age programs have been revised and completed the public review. These may be released this Fall.

Council Cluster  
Meetings met  
once a quarter  
in 2013

### Council Cluster Meetings

Council Cluster Meetings meet for 1 ½ hours and are free to Family Day Care (FDC) and Group Family Day Care (GFDC) providers. Each meeting covers one or more of the 9 topic hours of NYS Office of Children and Family Services (OCFS).

The meetings offer free training, networking with other providers, opportunity to ask questions and share ideas and/or hear a guest speaker. The meetings are facilitated by two Registrars from the Child Care Council of Dutchess and Putnam Staff.

In 2013, the first cluster meeting was held for School Age Child Care Professionals.

### Increased Presence in the Field

The Office of Children and Family Services (OCFS) serves New York's public by promoting the safety and well-being of our children, families and communities. OCFS achieves these results by setting and enforcing policies, building partnerships, and funding and providing quality services. In order to promote safety and well-being of children in child care, the Child Care Council's licensors and registrars must be available to child care providers for technical assistance and must inspect programs to evaluate compliance with regulations. Research shows that unannounced inspections of child care programs encourages compliance with regulatory standards and improves quality. The recent change in licensing and registration from two years to four years for subsequent renewal periods was an opportunity for the Division of Child Care Services to evaluate the timing of inspections and their purpose. As a result, the Child Care Council of Dutchess and Putnam, Inc. has had licensors and registrars in the field more often.

The Council  
performed 453  
inspections in  
2013



## Building Healthy Kids

Liz Hargraves, RN

The Child Care Council of Dutchess and Putnam Inc. employs a Registered Nurse to provide health consultancy services to all child care programs in their efforts to provide a safe and healthy environment for the children they serve.

Services include guiding them through the steps to become approved to administer medication, answering questions about common child care health issues, helping develop new and reviewing current health care plans, helping providers accommodate children with special health care needs completing Individualized Health Care Plans, and facilitating Medication Administration Training (MAT).

The number of  
MAT trainings  
offered in 2014:

10

Number of  
providers who took  
MAT training in  
2013:

Dutchess: 29

Putnam: 21

Number of  
programs that were  
MAT Approved in  
2013:

Dutchess: 90

Putnam: 40

Number of providers  
for whom Liz Hargraves,  
RN was the Health Care  
Consultant in 2013:

Dutchess: 60

Putnam: 29



## Child Care Subsidy

Marion Eagen, Kim Wolfe, Dawn Haecker

The cost of child care can often be a family's second highest expense, second to rent or mortgage payments. To help low-income working parents with the cost, the federal and state governments provide, all counties, including Dutchess and Putnam, with funds and determine income guidelines for subsidy.

NYS established the state guidelines of income below 200% of the Federal Poverty guidelines for qualifying families. Individual counties determine their guidelines based on their state allocation and local funds. Throughout 2013, Dutchess County used 125% of Federal Poverty Guidelines and Putnam used 200%. To be eligible for a subsidy at 125%, a family of 3 can earn up to \$23,162 while at 200% a family of 3 can earn up to \$37,060.

Parents in both counties chose care on their own or by receiving referrals from the Council Referral Services. The parents then informed their local Department of Social Services (DSS) and the child care providers were paid by DSS. The rate of pay was based on market rates established in September 2011 from a survey of NYS child care providers.

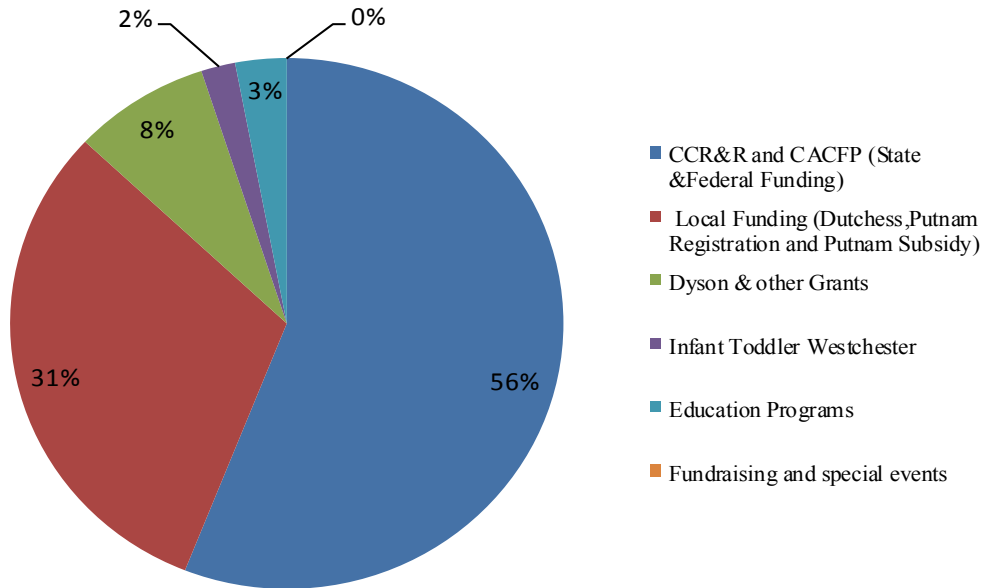
Subsidies pay child care costs for children age 12 and under. Except in special circumstances, when a child reaches age 13, child care subsidy support is no longer available to families. This, however, is a critical age at which proper supervision and structured activities will reduce the risks of delinquent behavior and unhealthy habits.



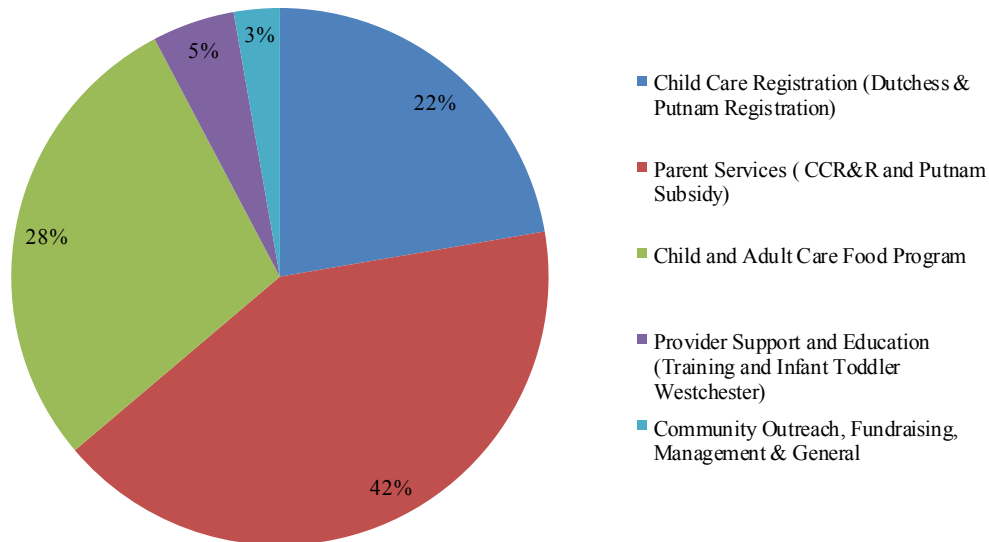
## Funding

Melinda Cirillo

**Child Care Council of Dutchess & Putnam, Inc.  
2013 Funding Sources**



**Child Care Council of Dutchess & Putnam, Inc.  
2013 Expenses**



\*\*Numbers are based on Un Audited Financial statements and Functional Expenses.

## Board of Directors, 2013

### Executive Committee

#### **Chair**

Linda Dunlap, [Marist College](#)

#### **Vice-Chair**

Julie Riess, Ph.D., [Member at Large](#)

#### **Secretary**

Linda Monkman, [Dutchess County Department of Mental Hygiene](#)

#### **Treasurer**

Howard Lynne, [Member at Large](#)

#### **Member at Large**

Diane Labenski, [Past Chair](#)

#### **Executive Director**

Jeanne Wagner, [Child Care Council of Dutchess and Putnam, Inc.](#)

### Members

**Rita Acerno:** [Child Care Provider](#)

**Emily Albers:** [Member at Large](#)

**Nicole Bonelli-Dubinski:** [Vassar College](#)

**Erian Buckley:** [City of Poughkeesie](#)

**Grace Caddell:** [Astor Early Childhood Programs, Head Start, Wingdale](#)

**Sara Capozzoli:** [Mid-Hudson Children's Museum](#)

**Tom Cataldo:** [Child Care Provider](#)

**Cecilia Cook:** [Dutchess County Regional Chamber of Commerce](#)

**Tina Cottrell:** [Parent](#)

**Laura Eastman-Follis:** [Nation Association of Social Workers—NYS Hudson Valley Division](#)

**Laureann Elting:** [Rhinebeck Savings Bank](#)

**Dana Gavin:** [The Center for the Prevention of Child Abuse](#)

**Carol Zaccara:** [Member at Large](#)

**Sue Serino:** [Dutchess County Legislature](#)

**Marge Horton:** [Dutchess County Legislature](#)

## Champions of Child Care

### 2013 Award Winners

**Dutchess County Rookie of the Year:** Noelle Napolitano, *Imagination Station Children's Center, Inc.*

**Putnam County Rookie of the Year:** Jessica Fosella, *Creative Kids ChildCare Center*

**Dutchess County Staff Member of the Year:** Kristen Jezsu, *Infant Toddler Center at Vassar College*

**Putnam County Staff Member of the Year:** Victoria Hooten, *The Children's Station of Brewster*

**Dutchess County Director of the Year:** Florence Winklharer, *Young Hearts Day Care, LLC*

**Putnam County Director of the Year:** Donna Jean Colello, *St. Lawrence O'Toole Early Childhood Learning Center*

**Dutchess County Nursery School of the Year:** *Bright Beginnings Preschool*

**Dutchess County Family Day Care Program of the Year:** Cynthia Emard

**Putnam County Family Day Care Program of the Year:** Tarah Oubina, *Mahopac Daycare*

**Dutchess County Group Family Day Care Program of the Year:** Karen Isidori, *Karen's Kiddie Care*

**Putnam County Group Family Day Care Program of the Year:** Darline Roveto, *Little Feet Daycare*

**Dutchess County School Age Child Care Director of the Year:** Lisa Blake, *Healthy Kids Extended Day Program @ Noxon Road*

**Dutchess County School Age Child Care Director of the Year:** Tara Cochran, *Healthy Kids Extended Day Program @ Violet Avenue*

**Putnam County School Age Child Care Program of the Year:** *Mt. Tremper Outdoor Ministries/Camp Herrlich After-School Program*

**Dutchess County Day Care Center Program of the Year:** *Honeybee Childcare Corp.*

**Putnam County Day Care Center Program of the Year:** *Heart 2 Heart Child Care LLC*

**Dutchess County Child Care Council Award of Excellence:** Daniska Perilli, *Saint Francis Hospital Day Care Center II*

**Putnam County Child Care Council Award of Excellence:** Doris Brenner, *Green Chimneys Children's Services, Inc.*



## *The Child Care Council of Dutchess and Putnam, Inc.*

### **Dutchess County Office:**

70 Overocker Road  
Poughkeepsie, NY 12601  
Phone: (845) 473-4141  
Fax: (845) 473-4161

### **Putnam County Office:**

Office Location:  
110 Old Route 6, Building #3  
Carmel, NY 10512

Mailing Address  
P.O. Box 1029  
Carmel, NY 10512  
Phone: (845) 808-1659  
Fax: (845) 225-1279

[www.childcaredutchess.org](http://www.childcaredutchess.org)

