

*The Child Care Council of Dutchess and Putnam, Inc.*

*2017 Report on  
The State of Early Care and Learning  
in Dutchess and Putnam Counties*



*Connecting Communities and Children*

The Child Care Council of Dutchess and Putnam, Inc. works to promote affordable and quality child care, provide information and support to families and strengthen the early childhood workforce in Dutchess and Putnam counties.



January 1, 2016 through December 31, 2016

## How We Have Grown

**1970**

The Dutchess County Legislature establishes the Dutchess County Child Development Committee. There is one secretary as the only paid employee. There are five day care centers in Dutchess County.



**1998**

The Council's on-site Resource Lending Library is made possible with funding from IBM and the American Business Collaboration.

**2015**

The Council celebrates 45 years of service to the community

**1981 to 1984**

The Dutchess County Child Development Council is formed. The Council is established as the Child Care Resource and Referral Service for Dutchess County. The Council administers the Child Care Food Program for family day care providers. There are 29 licensed day care centers and 30 family day care homes. Staff increases from two to six.

**2006**

Upon the request of the Office of Children and Family Services, the Council's Board of Directors votes unanimously to provide services in Putnam County, to include: resource and referral, registration, food program administration, and child care subsidy administration. Services in Putnam County begin in February.

**2014-2016**

The Council maintains National Quality Assured status.



**1991 to 1995**

The Council becomes the NYS Registrar for family day care homes. Through a contract with the Dutchess County Department of Health, the Council employs two Early Intervention Initial Service Coordinators. Staff grows to 15.

**2013**

The Council becomes Quality Assured by Child Care Aware of America.

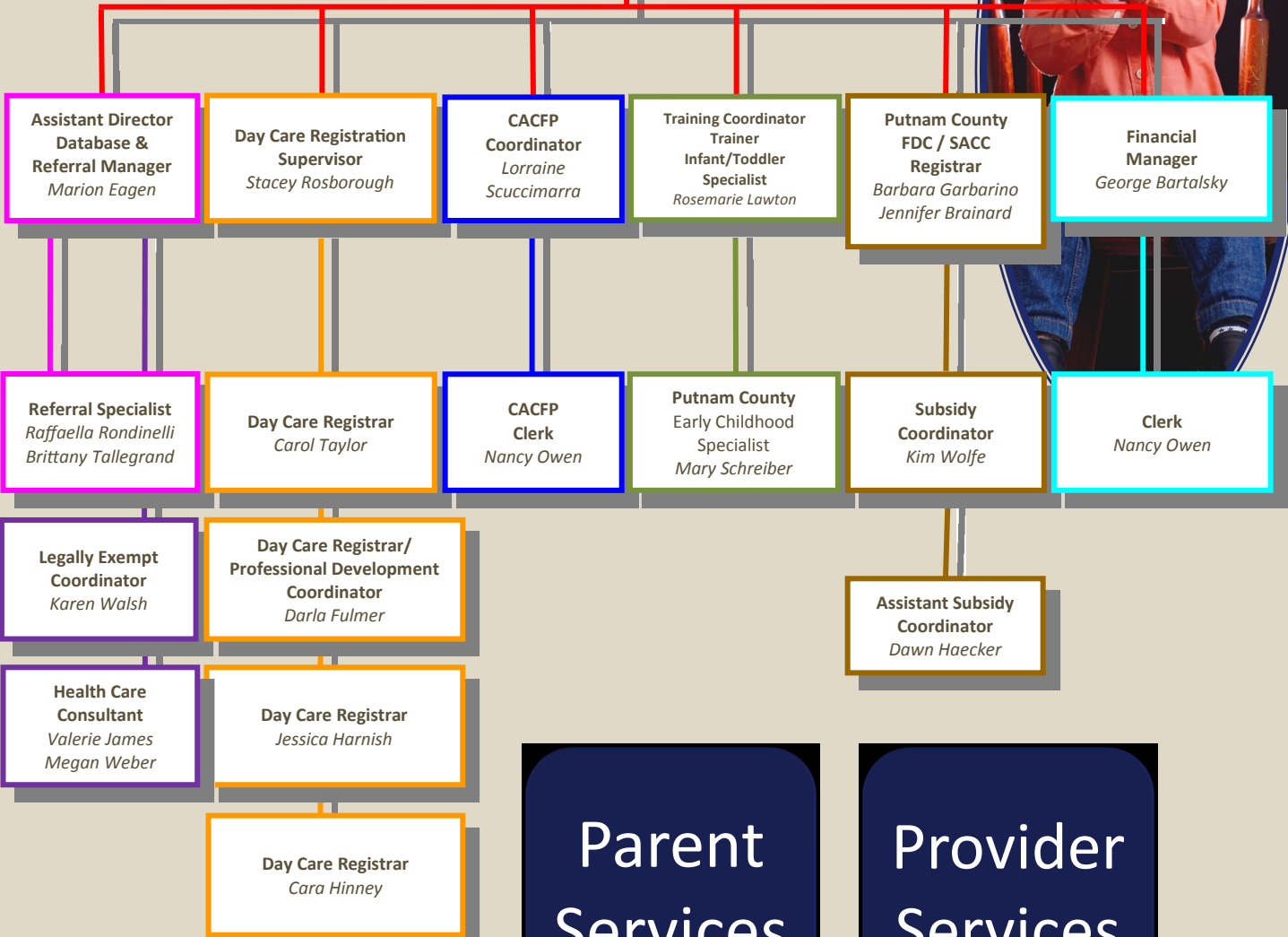


**CHILD CARE COUNCIL OF DUTCHESS AND PUTNAM COUNTIES ORGANIZATIONAL CHART- 2016**



**BOARD OF DIRECTORS**

**Executive Director**  
*Jeanne Wagner*



**Parent  
Services**

**Provider  
Services**

**Support  
Services**

**Child and  
Adult Care  
Food  
Program**

**Increasing  
Quality**

## Child Care Facts and Figures

Jeanne Wagner



New York State is ranked as the fifth least affordable state for the cost of child care.

The average annual cost of full time care for an infant in Center-based care based on Market Rates is \$13,104 and \$17,680 in Dutchess and Putnam Counties, respectively.

In New York State, the cost of infant care in a day care center is \$15,028 and in a family child care home is \$10,556 annually.

Investments in high quality early education generate returns of over \$8 for every \$1 spent.

In 2011-2015, about 12% of children in Dutchess County were living in poverty, up 3 points since 2000, yet below the statewide and national rates, both 22% .

In 2015, 7.4% of 3-5 year olds received special education services in Dutchess County, higher than the state (5.9%) and the region (6.8%).

In 2016 in New York State, the average annual income of child care workers was \$27,580.

In Dutchess and Putnam Counties of those surveyed in 2015, the two biggest problems in finding care were cost of care and the provider's schedule.

LEARNING



According to a 2016 survey in our area, parents faced with a child care crisis:

- 40% called out of work
- 38% leave work early
- 32% arrive late
- 26% feel distracted
- 19% Cut back work hours
- 14% Feel unproductive

**Parents need affordable, safe, reliable, quality child care!**

In 2016, the Child Care Council of Dutchess and Putnam, Inc. hosted its 13th Annual Champions of Child Care event with approximately 291 attending. The Council received over 400 nominations for Special Awards and presented Special Awards to 22 individuals or programs. 43 individuals received awards for celebrating milestones of years in the early care and education field. 8 individuals were recognized for outstanding education achievements.

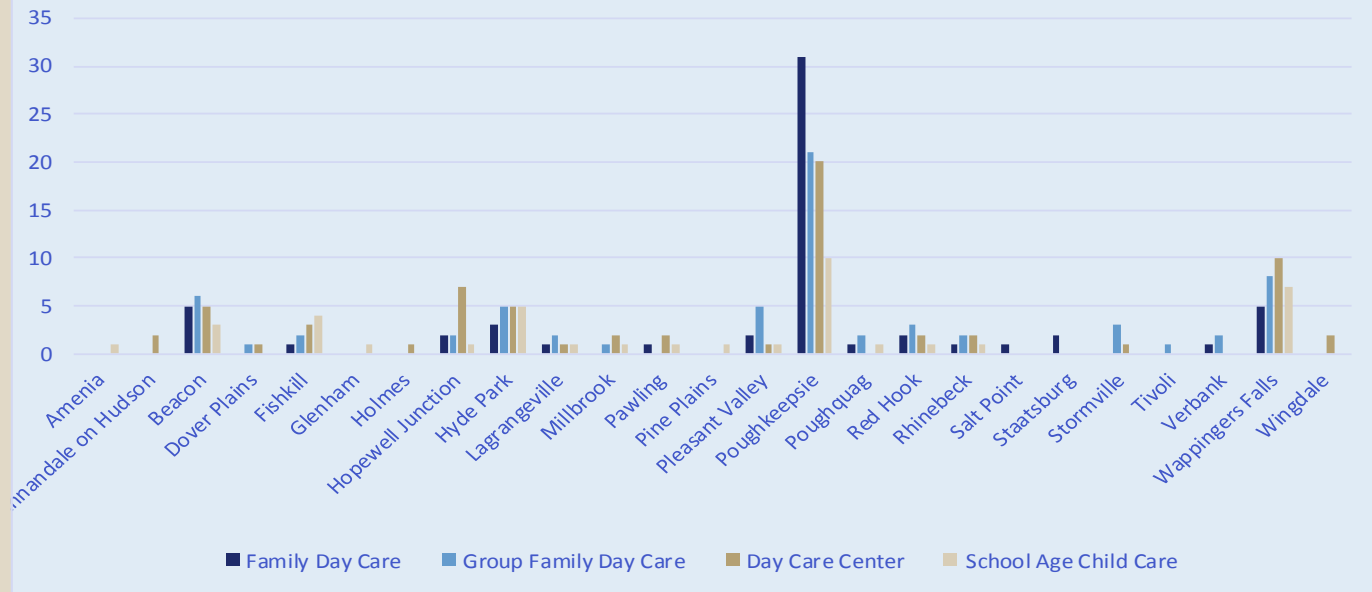
From 2015-2016, attendance at trainings given by the Child Care Council of Dutchess and Putnam increased by 27.9%

From 2015=2016, the total number of available slots increased by approximately 5% from 11,184 to 11,714.

In 2016, in both Dutchess and Putnam Counties, the total requests for child care, approximately 40% were for children one year of age and under.

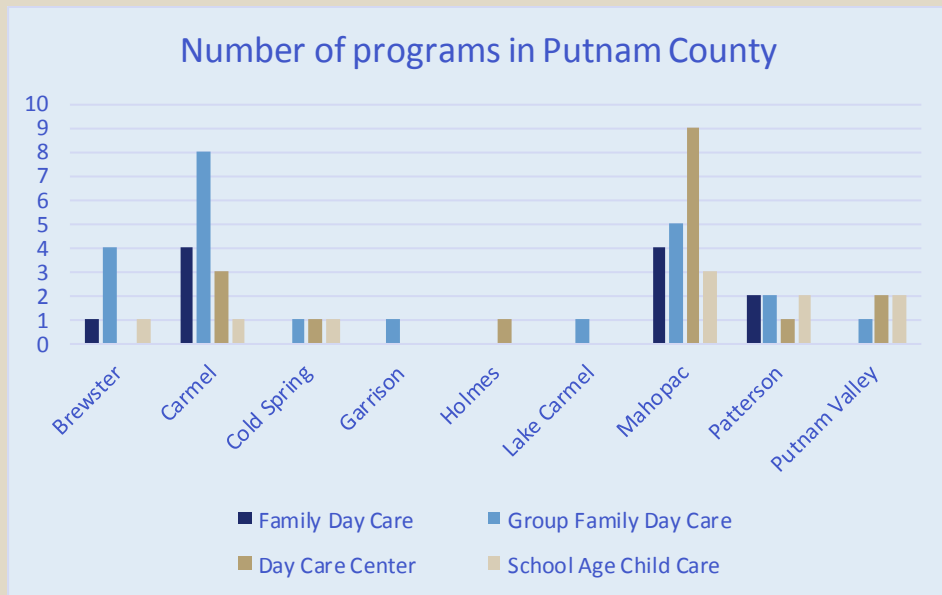
As of 12/31/2016, there were 319 regulated programs in Dutchess and Putnam Counties.

### Number of programs in Dutchess County



### Requests for Child Care in Dutchess County

Zip Code	Town	Counselor Assisted	Online Referral Module
12501/12546/12592	Amenia/Millerton/Wassaic	3	2
12508	Beacon	13	2
12522	Dover Plains	2	1
12524	Fishkill	8	4
12564	Holmes	2	0
12533	Hopewell Junction	15	5
12538	Hyde Park	31	6
12540	Lagrangeville	7	1
12545	Millbrook	5	1
12531	Pawling	2	0
12567/12581	Pine Plains/Stanfordville	0	1
12569	Pleasant Valley	15	7
12601/12603	Poughkeepsie	207	47
12570	Poughquag	6	2
12571	Red Hook/Milan	5	3
12572/12514	Rhinebeck/Clinton Corners	7	3
12578	Salt Point	4	0
12580	Staatsburg	3	0
12585	Stormville	2	3
12583	Tivoli	1	0
12590	Wappingers Falls	34	9
12594	Wingdale	2	0
<b>TOTAL</b>		<b>374</b>	<b>97</b>
<b>TOTAL REQUESTS</b>			<b>471</b>



Requests for Child Care in Putnam County			
Zip Code	Town	Counselor Assisted	Online Referral Module
10509	Brewster	8	1
10512	Carmel	21	4
10516	Cold Spring	1	0
10524	Garrison	2	1
10541	Mahopac	12	1
12563	Patterson	1	2
10579	Putnam Valley	1	1
10537	Lake Peekskill	3	0
<b>TOTAL</b>		<b>49</b>	<b>10</b>
<b>TOTAL REQUESTS</b>			<b>59</b>

The above chart shows the number of child care requests across the towns, cities and villages of Putnam County. The most requested location for child care was Carmel, with Mahopac and Brewster following as second and third, respectively.

The chart on the left shows the towns and cities in Dutchess County where parents requested child care. The most requested location was Poughkeepsie with 254 requests. Wappingers Falls, Hyde Park Hopewell Junction and Pleasant Valley were the next most requested areas. The County's population is the most densely concentrated in urban and suburban areas. Requests for child care in its more rural locations, such as Amenia, Tivoli, Pine Plains, and other towns in Northern Dutchess County were substantially lower, with five or fewer requests for each.



## Building Quality Through Professional Development

Rosemarie Lawton, Mary Schreiber, Darla Fulmer

*"National Research has demonstrated that the quality of young children's experiences in early care and education is directly related to the specific preparation in early childhood education obtained by the adults caring for and educating them."*

[www.earlychildhood.org/pdfs/CoreBody.pdf](http://www.earlychildhood.org/pdfs/CoreBody.pdf)

The Council published four training calendars in 2016 which included 130 available trainings.

In 2016 the Council provided face-to-face trainings at 14 centers, school age and group family day care programs.

The number of attendees for 2016 trainings was 669.



### Parent Education

Cara Hinney, Carol Taylor

CCCDP has initiated partnerships with local human service agencies, hosted parent trainings, distributed Parent Needs Assessments and attended a record number of visibility events from 2011-2015. Part of CCCDP's achievement in becoming quality assured in 2013 resulted from successfully incorporating parent education resources and services. Several hundred Parent Needs Assessment surveys have been distributed at visibility events, trainings and through the mail. The surveys ask parents a series of questions: what childcare topics interest them; what times are convenient to attend trainings; and do they prefer to receive information via mail or email. Once analyzed, the results support CCCDP's efforts in setting goals and implementing parent education training. Since 2013, CCCDP has successfully offered two parent education trainings a year with the assistance of our partnering agencies. Further efforts by CCCDP led to the creation and quarterly circulation of The Parent Connection in 2011, CCCDP's first online newsletter dedicated to parents. Its first publication was sent to over 200 parents and community agencies. Now, in its sixth year of circulation, it has over 2250 recipients and has a growing number of professionals contributing articles and other related information.

In 2016, CCCDP continues its outreach by attending visibility events where local human services agencies are brought together with representatives from the community.

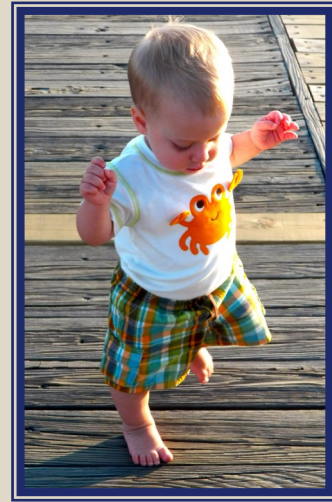
In 2016, CCCDP retained partnering agreements with 5 local human services agencies to broaden the delivery of our parent outreach services and resources.

CCCDP has offered 7 parent training classes since 2013. Each class has reached its maximum number of attendees. In a creative twist, childcare providers were encouraged to bring parents with an incentive to earn a coupon for another training class.



### Babies Step Forward

The Child Care Council of Dutchess and Putnam is participating in the federally funded Early Head Start – Child Care Partnership Program with Westchester Community Opportunity Program (Westcop) as the lead agency. The project, “Babies Step Forward,” is designed to improve the quality and enrich participating programs that serve low income infants and toddlers in Westchester, Putnam and Dutchess Counties. The Council’s responsibility is to provide Child Development Associate (CDA) training and Medication Administration Training to all infant and toddler staff in two participating day care centers. Poughkeepsie Child Development (Dutchess County) and Over the Rainbow Learning Center (Putnam County) are receiving the Council’s training as well as program resources and support for parents of the young children.



### Child Care Tuition Scholarship Program

Through this program, funded by the Dyson Foundation, children were in safe, dependable and nurturing center-based programs in Dutchess County. Parents were able to work or go to school knowing that their children were in those environments rather than in piecemeal child care arrangements. Child care staff could develop positive relationships with the children who were in care in a regular schedule.

In 2016 this program supported:

- 11 child care centers
- 19 families
- 23 children, ages infant to 11 years

All families earned under 250% of the federal poverty guidelines, or for a family of three an annual income not to exceed \$51,050.



### Child Care Program Quality

Quality child care is defined as positive early learning experiences which foster intellectual, social and emotional development and lay the foundation for later school success for all children. Therefore, children living in high-risk environments need additional supports to promote their healthy growth and development. All child-care arrangements including family, friend, neighbor, and family– and center-based child care, have the potential to provide high-quality, individualized, responsive and stimulating experiences that occur within the context of strong relationships and which are imbedded in everyday routines.

*(source: <http://www.zerotothree.org/early-care-education/>)*

As part of the Child Care Resource and Referral contract, the Child Care Council of Dutchess and Putnam, Inc. distributed Quality Improvement grants to regulated early childhood programs, 15 in Dutchess and 15 in Putnam County.



## Child Care Resource and Referral (Dutchess & Putnam)

Marion Eagen, Raffaella Rondinelli, Brittany Tallegrand

- \* Provides information to parents on locating child care, consumer education, referrals, subsidies, services for families
- \* Recruits child care providers, provides start-up information and technical assistance in meeting regulatory requirements
- \* Provides the Community with education on child care issues and current data needed in planning for community services
- \* Supports employers in planning, implementing and providing employee child care services



### Statistics

Number of:	Dutchess	Capacity	Putnam	Capacity	Program Totals	Total Capacity
Day Care Centers	67	4872	27	2057	94	6929
Group Family Day Care	69	1088	24	384	93	1472
Family Day Care	67	530	12	95	79	625
School Age Child Care	41	2056	11	640	52	2696
Total	244	8546	74	3176	318	11722

\* estimates

## Legally Exempt Enrollment (Dutchess & Putnam)

Karen Walsh



- \* Legally exempt providers deliver informal, non-registered child care for relatives and a limited number of non-relative children who receive subsidy from the parents' local Department of Social Services.
- \* As the Enrollment Agency, the Council is responsible for reviewing and approving enrollment applications, as well as visiting a percentage of the legally exempt homes to inspect basic health and safety compliance.
- \* As of December 31, 2016, the number of legally exempt providers that have a payable status in Dutchess and Putnam counties was 273.

## Child and Adult Care Food Program

Lorraine Scuccimarra and Nancy Owen



The Child Care Council of Dutchess and Putnam, Inc. is a sponsor of the Child and Adult Care Food Program (CACFP). CACFP is a federal program that reimburses child care providers for nutritious meals and snacks served to children in their care.

Children that are cared for by providers participating in the CACFP benefit by being fed nutritious USDA regulated meals that ensure their proper development. These children gain from early nutrition education that helps them establish positive eating habits that will enrich the quality of their diet throughout life.

Parents of children in child care are assured that their child (ren) receives high quality meals. With proper nutrition, the child is less likely to experience illness and fatigue and will develop at a normal physical and intellectual pace. Good nutrition is the recipe for an all-round happier child.

Child care providers receive nutrition education and support services from their CACFP sponsor that helps them serve nutritious meals and creates a positive eating environment for children. The quality of child care provided in our community is improved due to educational and financial resources available to caregivers through the CACFP.

In 2016, an average of 740 children a month were served healthy meals and snacks by CACFP providers in Dutchess and Putnam Counties.

In 2016, the Council had 57 Family, Group Family and Legally Exempt providers participating in CACFP.

## Infant and Toddler Services

Rosemarie Lawton

The Child Care Council of Dutchess and Putnam, Inc., a member of the Region VI Infant and Toddler Network, provides support services to child care programs based on the Ten Components of Quality Infant Toddler Care. In July 2016, CCCDP began serving Infant and Toddler Programs in Orange and Sullivan Counties, in addition to Dutchess, Putnam and Ulster Counties.

### Ten Components of Quality Infant Toddler Care

1. Child Care Programs Following Appropriate Health and Safety Practices
2. Staff Well Trained in Early Childhood Development
3. Age Appropriate Environments
4. Small Groups with Optimal Adult/Child Ratios
5. Primary Caregiver Relationships and Continuity of Caregiver Over Time
6. Active and Responsive Caregiving to Support Children's Development
7. Curriculum, Observation and Individualized Programming
8. Support of Emerging Language and Literacy
9. Family Involvement and Cultural Continuity
10. Comprehensive Support Services

In 2016, Child Care Providers participated in group and/or onsite trainings or technical assistance opportunities in the following topic areas:

- Infant Toddler Environmental Rating Scales
- Discipline
- Developmentally Appropriate Environments and Materials
- Developmental Milestones
- Challenging Behaviors
- Language and Literacy
- Active and Responsive Caregiving
- Curriculum and Individualized Programming
- Family Engagement
- Room Arrangement
- Freedom of Movement
- Primary Caregiving and Continuity of Care



In 2016, the Council provided 120 hours of face-to-face technical assistance.

In 2016, 10 Infant Toddler Environmental Rating Scale (ITERS) Assessments Completed

243 children from 25 programs were impacted in Dutchess, Putnam, Ulster, Orange and Sullivan Counties.

In 2016, 10 programs became Freedom of Movement certified



## Family Day Care and School Age Registration

Stacey Rosborough, Barbara Garbarino, Carol Taylor,  
Darla Fulmer, Jessica Harnish, Cara Hinney, Jennifer Brainard

**2016 Family Day  
Care  
Total Homes: 79  
Dutchess: 67  
Putnam: 12**

**2016 School Age  
Child Care Total  
Programs: 52  
Dutchess: 41  
Putnam: 11**

The Child Care Council of Dutchess and Putnam, Inc. (CCCDP) regulates family day care programs and the after school child care programs in Dutchess and Putnam Counties. This includes processing new and renewal applications, monitoring and inspecting programs, investigating complaints, and offering professional training and technical assistance.

### Complaints

The Office of Children and Family Services maintains a toll-free line, (800) 732-5207 for complaints about child care programs. Any person can also call The Child Care Council, (845) 473-4141, during normal work hours and a staff person will take the information.

**In 2016 the  
Council  
Investigated  
19 complaints**

**Council Cluster  
Meetings met  
once a quarter  
in 2016**

### Council Cluster Meetings

Council Cluster Meetings are 1 ½ hours and are free to Family Day Care (FDC) and Group Family Day Care (GFDC) providers. Each meeting covers one or more of the 9 topic areas required by NYS Office of Children and Family Services (OCFS).

The meetings offer training, networking with other providers, opportunity to ask questions and share ideas and/or hear a guest speaker. The meetings are facilitated by two Registrars from the Child Care Council of Dutchess and Putnam Staff.

### Increased Presence in the Field

The Office of Children and Family Services (OCFS) serves New York's public by promoting the safety and well-being of our children, families and communities. OCFS achieves these results by setting and enforcing policies, building partnerships, and funding and providing quality services. In order to promote safety and well-being of children in child care, the Child Care Council's registrars must be available to child care providers for technical assistance and must inspect programs to evaluate compliance with regulations. Research shows that unannounced inspections of child care programs encourages compliance with regulatory standards and improves quality.

**The Council  
performed 482  
inspections in  
2016**

## Building Healthy Kids

Valerie James, RN, Megan Weber, RN

The Child Care Council of Dutchess and Putnam Inc. employs a Registered Nurse to provide health consultancy services to all child care programs in their efforts to provide a safe and healthy environment for the children they serve.

Services include guiding them through the steps to become approved to administer medication, answering questions about common child care health issues, helping develop new and reviewing current health care plans, helping providers accommodate children with special health care needs, completing Individualized Health Care Plans, and facilitating Medication Administration Training (MAT).

The number of  
MAT  
trainings  
offered in  
2016: 6

The Health Care Consultant at the Council serviced 58% of all MAT trained providers in Dutchess and Putnam Counties.

Number of programs that were MAT Approved in 2016:  
Dutchess: 84  
Putnam: 45

Number of providers the Health Care Consultant reviewed and signed a completed Health Care Plan in 2016:  
Dutchess: 23  
Putnam: 18



## Child Care Subsidy

Marion Eagen, Kim Wolfe, Dawn Haecker

Parents call the Child Care Council of Dutchess and Putnam, Inc. everyday looking for child care, and often for a way to pay for it. Child care is an expensive necessity for most working parents. In Dutchess and Putnam Counties the cost of child care for a year is more than rent, a car payment, or tuition at Dutchess Community College. Dutchess Community College tuition for two semesters is \$3,696. New York ranks in the top five most expensive states in the country for child care.

In both Dutchess and Putnam Counties, a parent may qualify for a low income child care subsidy to help pay for child care. In Dutchess County that is through the Department of Community and Family Services and in Putnam County the Department of Social Services handles the subsidies. In 2016 both counties' eligibility levels to qualify for a subsidy was at 200% of the federal poverty level. That translates to a family of three earning up to \$40,320 per year.

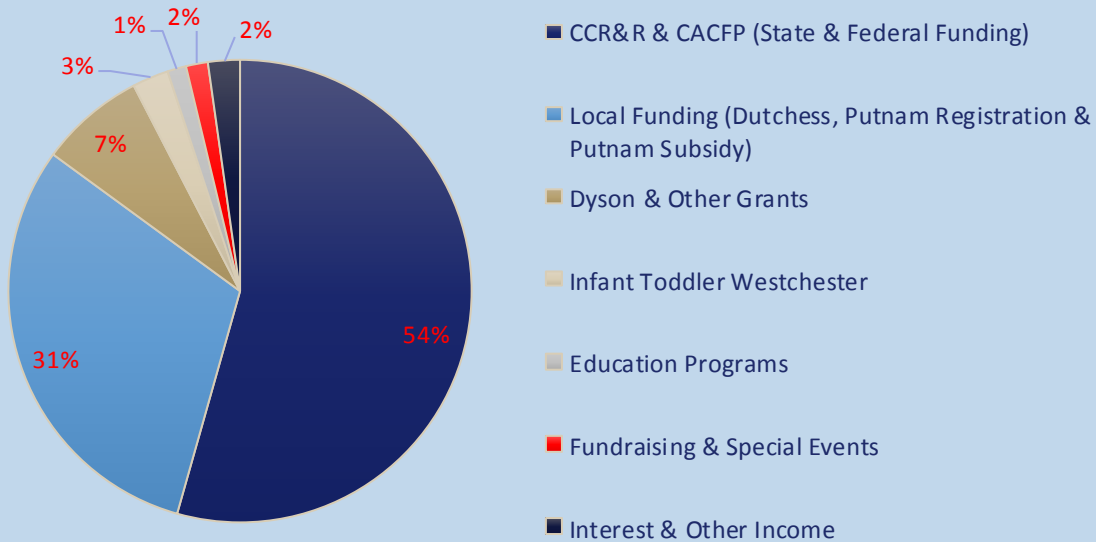
Child Care Council staff can give you more information about child care subsidies or can direct you to the person who can help you.



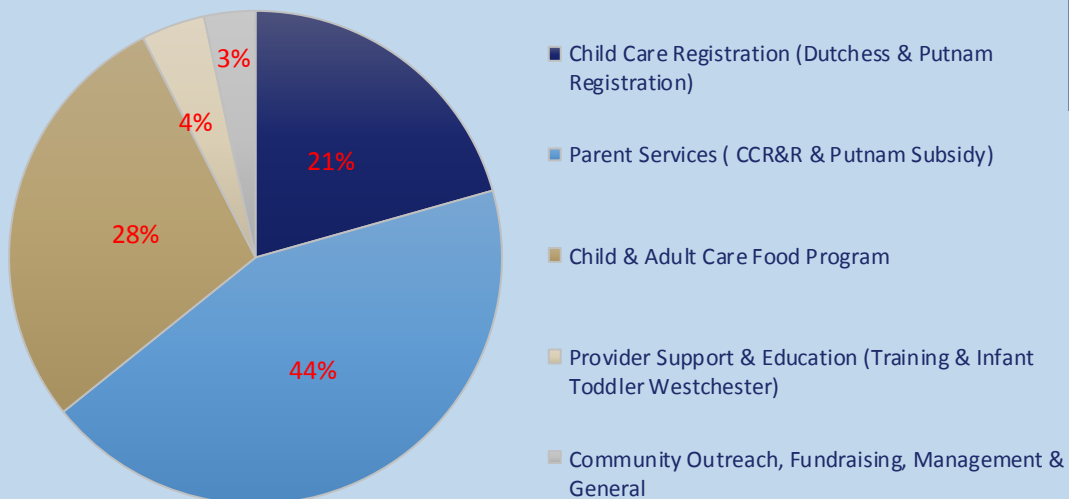
## Funding

George Bartalsky

### *Child Care Council of Dutchess & Putnam, Inc.* 2016 Funding Sources



### *Child Care Council of Dutchess & Putnam, Inc.* 2016 Expenses



\*\*Numbers are based on Unaudited Financial statements and Functional Expenses.



## Board of Directors, 2016

### Executive Committee

#### Chair

Julie Riess, Ph.D, [Member at Large](#)

#### Vice-Chair

Margaret Olimpieri, [Dutchess Community College](#)

#### Secretary

Linda Monkman, [Dutchess County Department of Mental Hygiene](#)

#### Treasurer

Aleta Symon, [Member at Large](#)

#### Members at Large

Rita Acerno, [Child Care Provider](#)

Nicole Bonelli, [Vassar College](#)

Erian Falcon, [City of Poughkeepsie](#)

Linda Dunlap, [Past Chair](#)

#### Executive Director

Jeanne Wagner, [Child Care Council of Dutchess and Putnam, Inc.](#)

### Members

**Lance Bixby:** [Dutchess County Department of Community and Family Services](#)

**Grace Caddell:** [Astor Early Childhood Programs](#)

**Laureann Elting:** [Rhinebeck Bank](#)

**Danette Garcia:** [Center for the Prevention of Child Abuse](#)

**Elizabeth Kwant:** [Dutchess County Regional Chamber of Commerce](#)

**Drita Nicaj:** [Member at Large](#)

**Donna Bolner:** [Dutchess County Legislature](#)

**Marge Horton:** [Dutchess County Legislature](#)

## Champions of Child Care

### 2016 Award Winners

#### Dutchess County Rookie of the Year:

[Lucia Swartz, Sol Silver Early Childhood Center](#)

#### Putnam County Rookie of the Year:

[Beth Ann Mahoskey, Mt. Tremper Outdoor Ministries](#)

#### Dutchess County Staff Member of the Year:

[Shelby Boettcher, Caitlin Hernandez, Lisa Marie Ruggiera, Kidz Town of Dutchess](#)

#### Putnam County Staff Member of the Year:

[Daniel Zabel, Kidz Country Learning Day Care Center](#)

#### Dutchess County Director of the Year:

[Ashley Romm, Healthy Kids Extended Day Program, Inc.](#)

#### Putnam County Director of the Year:

[Darline Roveto, Little Feet Childcare Center, LLC](#)

#### Dutchess County Outstanding Special Needs Award:

[Mid Hudson Valley Early Education Center](#)

#### Putnam County Outstanding Special Needs Award:

[Jan Jimemez, Jan's Kidz Childcare, Inc.](#)

#### Dutchess County Family Day Care Program of the Year:

[Doretha Oliver, The Happy Face Daycare](#)

#### Putnam County Family Day Care Program of the Year:

[Catherine Babnick, Cathy's Cottage, LLC](#)

#### Dutchess County Group Family Day Care Program of the Year:

[Trudy Lackner, The Children's Corner](#)

#### Putnam County Group Family Day Care Program of the Year:

[Marisela Jaramillo](#)

#### Dutchess County School Age Child Care Program of the Year:

[First Reformed Church of Fishkill](#)

#### Putnam County School Age Child Care Program of the Year:

[Green Chimneys Children's Services, Inc.](#)

#### Dutchess County Day Care Center Program of the Year:

[Honeybee Childcare Corp.](#)

#### Putnam County Day Care Center Program of the Year:

[Creative Kids ChildCare Center, Creative Kids Kent, LLC. Creative Kids Mahopac](#)

#### Dutchess County Child Care Council Award of Excellence:

[Judy Wyskida](#)

#### Putnam County Child Care Council Award of Excellence:

[Rita Acerno](#)



## *The Child Care Council of Dutchess and Putnam, Inc.*

### **Dutchess County Office:**

70 Overocker Road  
Poughkeepsie, NY 12601

Phone: (845) 473-4141

Fax: (845) 473-4161

### **Putnam County Office:**

110 Old Route 6, Building #3  
Carmel, NY 10512

Phone: (845) 808-1659

Fax: (845) 225-1279

[www.childcaredutchess.org](http://www.childcaredutchess.org)



*The programs provided by this agency are partially funded by moneys received from the County of Dutchess.*